



PLUS

For intensive use, for private and public solutions
Double built-in flashing light, two-coloured green/red

Double spring (6 m model) to counter balance movement and make it more fluent

Universal box: bar can be installed both right or left

Possibility to set different speed in opening and closing motion

With 24 Vdc CT10224 control unit with integrated display

Encoder for obstacle detection and immediate run inversion




Robust gears and levers for reliable functioning over time

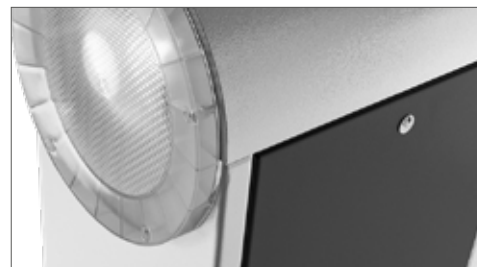
Energy saving mode

Integrated receiver

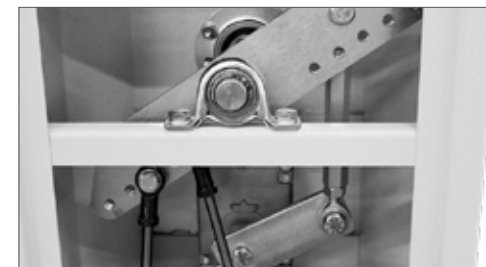
Anti-UV rays epoxy power coating

MODELS

CODE	DESCRIPTION	PCS PALLET
 ALT324KF	Barrier body, 24 Vdc motor, with control unit in box, with integrated receiver, with encoder, double built-in led flashing light. For 3 m bar, connection for bars included	5
 ALT424K	Barrier body, 24 Vdc motor, with control unit in box, with integrated receiver, with encoder, double built-in led flashing light. For 4 m bar, connection for bars included	8
 ALT624K	Barrier body, 24 Vdc motor, with control unit in box, with integrated receiver, with encoder, double built-in led flashing light. For 6 m bar, connection for bars included	5



Double Led flashing light



Metallic gear + shock resistant motor (ALT624K)



CT10224 control unit with integrated display



New bar of 5 m for ALT4K

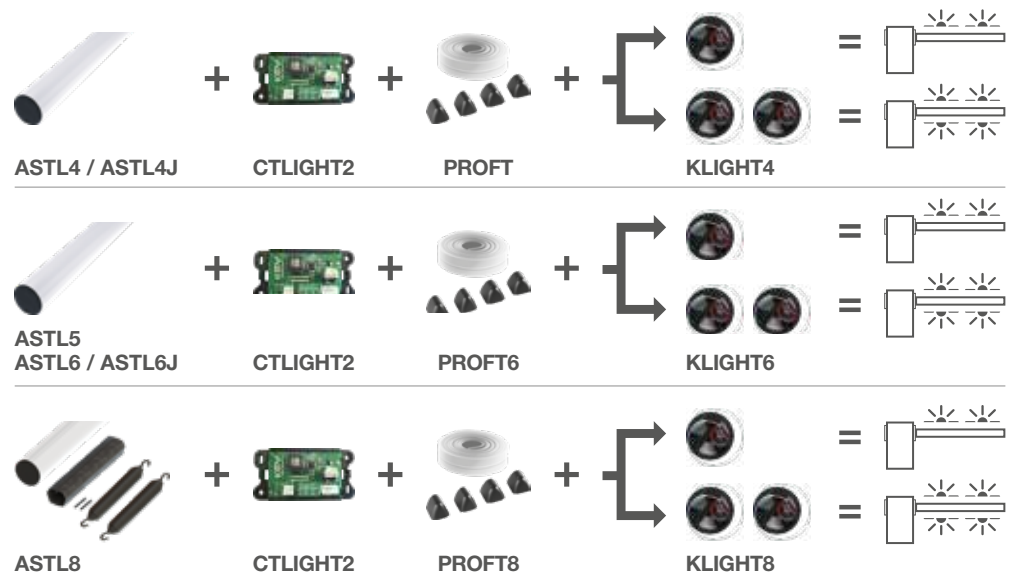
TECHNICAL DATA

		ALT324KF	ALT424K	ALT624K
MECHANICAL DATA				
torque	Nm	40	200	305
working cycle	%	50	80	80
opening time at 90° **	sec	1	3,5	6/12*
ELECTRICAL DATA				
control board		CT10224F	CT10224	CT10224
power	Vac	230	230	230
consumption	A	1,6	1,3	1,3
absorbed power	W	330	300	300
integrated lights		yes	yes	yes
GENERIC DATA				
protection degree	IP	54	54	54
dimensions (L - D - H)	mm	400 - 280 - 1188	320 - 220 - 1110	400 - 280 - 1188
weight	kg	62	47	67
working temperature	°C	-20 + 55	-20 + 55	-20 + 55
maximum bar length	m	3	4	6 *(8 mt)

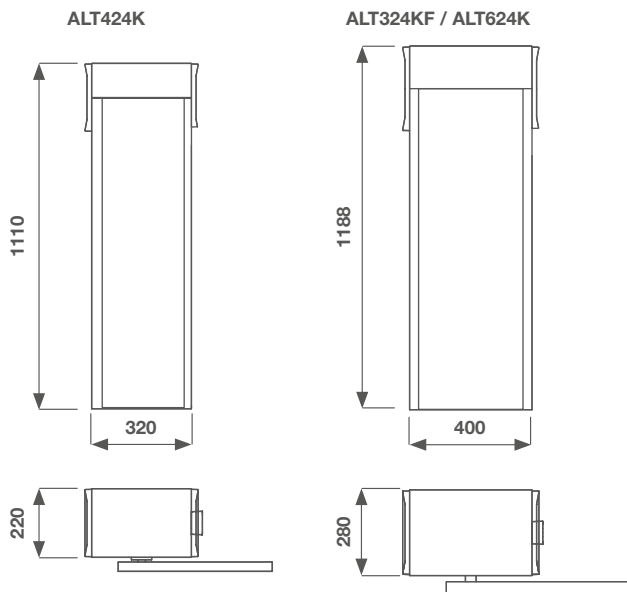
* with 8 m bar

** without accessories

HOW TO CHOOSE THE LED LIGHT SYSTEM FOR BARRIERS



DIMENSIONS



BAR	CODE	CLEAR OPENING (LP)
3 m	ALT324KF + AST3F	2740 mm
4 m	ALT424K + ASTL4	3780 mm
4 m	ALT424K + ASTL4J	3780 mm
5 m	ALT424K + ASTL5	4780 mm
6 m	ALT624K + ASTL6	5640 mm
6 m	ALT624K + ASTL6J	5640 mm
8 m	ALT624K + ASTL8	8040 mm

ALT324KF ACCESSORIES



AST3F
Aluminum tubular bar L=3 m Ø 60 mm (not fitting with accessories)

PC 1



CP-BR6
Anchorage plate with rag bolts

PC 1

ALT424K ACCESSORIES



ASTL4
Aluminum bar L=4 m Ø 60 mm (without accessories)

PC 1



ASTL4J
2+2 m aluminum bar Ø 60 mm + joint

PC 1



AS-SNO3
Aluminum bar with articulated joint (max. L. 3 m) preassembled. Only for ALT424K

PC 1



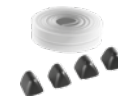
ASTL5*
Aluminum bar L=5 m Ø 60 mm (without accessories)

PC 1



CP-BR
Anchorage plate with rag bolts

PC 1



PROFT
Flexible rubber profile, 8 m and plug set for ASTL4 (transparent)

PC 1

ALT624K ACCESSORIES



ASTL6
Aluminum bar L=6 m Ø 90 mm (without accessories)

PC 1



ASTL6J
3+3 m aluminum bar, Ø 90 mm + joint

PC 1



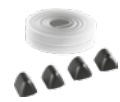
ASTL8**
4,2+4,2 m aluminum bar, Ø 90 mm + joint + springs

PC 1



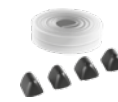
CP-BR6
Anchorage plate with rag bolts

PC 1



PROFT6
Flexible rubber profile, 12 m and plug set (transparent)

PC 1



PROFT8
Flexible rubber profile, 16 m and plug set (transparent)

PC 1

ACCESSORIES



APFX
Fixed support RAL 7047

PC 1



APM
Mobile support RAL 9010

PC 1



CTLIGHT2
Control unit for KLIGHT

PC 1



KLIGHT4
Led lights for 4 m bar

PC 1



KLIGHT6
Led lights for 5 and 6 m bar

PC 1



KLIGHT8
Led lights for 8 m bar

PC 1



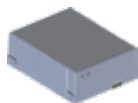
LOOP2
Magnetic sensor, one coil, one outputs

PC 1



SKIRT2
Kit fence, length 1,7 m

PC 1



KBP
Battery back-up kit

PC 1



KITFIXBATT
Fixing batteries brackets

PC 1



AD
Red reflecting adhesive stripes

PC 1



TWIN
Interface for master/slave function

PC 1



SNAP
Snap-off system for ALT324KF

PC 1

* for ASTL5 the combining of PROFT6, KLIGHT6 and APFX is recommended

** for ASTL8 the combining of APFX is recommended